

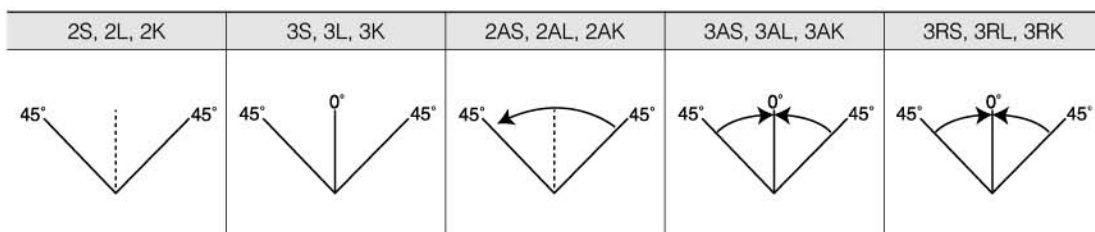


SELECTOR SWITCH

KH-2202 Series**CLASSIFICATION****KH-2202 2S - 1 1**

① ② ③

① ACTUATOR	2S	2 STEP MAINTAINED / SHORT LEVER
	3S	3 STEP MAINTAINED / SHORT LEVER
	2L	2 STEP MAINTAINED / LONG LEVER
	3L	3 STEP MAINTAINED / LONG LEVER
	2AS	2 STEP SPRING RETURN / SHORT LEVER
	3AS	3 STEP SPRING RETURN / SHORT LEVER
	3RS	3 STEP/LEFT: MAINTAINED, RIGHT: SPRING RETURN/SHORT LEVER
	2AL	2 STEP SPRING RETURN / LONG LEVER
	3AL	3 STEP SPRING RETURN / LONG LEVER
	3RL	3 STEP/LEFT: MAINTAINED, RIGHT: SPRING RETURN/LONG LEVER
	2K	2 STEP MAINTAINED / KEY SWITCH
	3K	3 STEP MAINTAINED / KEY SWITCH
	2AK	2 STEP SPRING RETURN / KEY SWITCH
	3AK	3 STEP SPRING RETURN / KEY SWITCH
3RK	3 STEP/LEFT: MAINTAINED, RIGHT: SPRING RETURN/KEY SWITCH	
② CONTACT	NUMBER OF NO CONTACT	
③ CONTACT	NUMBER OF NC CONTACT	



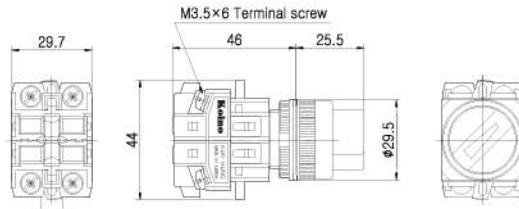
CONTROL COMPONENT



CONTROL COMPONENTS



KH-2202-2S
KH-2202-3S
KH-2202-2AS
KH-2202-3AS
KH-2202-3RS



SQUARE LIGHT

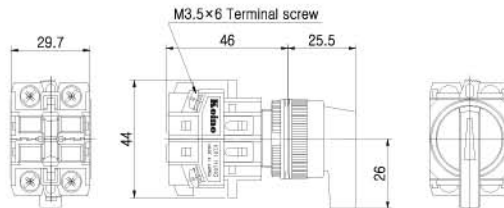
TOWER LIGHT

MICRO SWITCH

FOOT SWITCH



KH-2202-2L
KH-2202-3L
KH-2202-2AL
KH-2202-3AL
KH-2202-3RL



LIMIT SWITCH

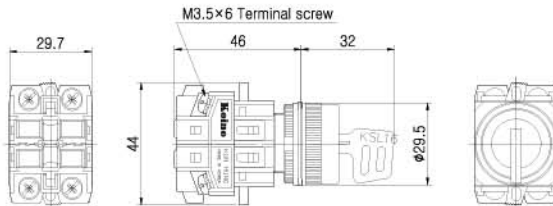
POWER SWITCH

HOIST SWITCH

CAM SWITCH



KH-2202-2K
KH-2202-3K
KH-2202-2AK
KH-2202-3AK
KH-2202-3RK



BUZZER

PHOTO SENSOR

PROXIMITY SENSOR

FLOATLESS LEVEL SWITCH

TIMER & COUNTER

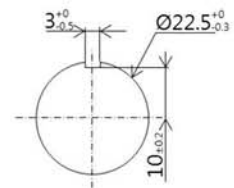
RELAY

SOCKETS

TERMINAL BLOCK

CONTROL BOX

PID TEMP. CONTROLLER



Panel Cut



Technical Information

Switching System

The switching element of KH-2201 is equipped with normally open contact and normally closed contact.

1A, 1B, 2A, 2B 1A1B, 2A2B 3A1B and 1A3B contacts are available. Normally 4 contact blocks can be assembled

Material

Contact

Silver alloy + Copper

Housing

BODY: Nylon glass

CONTACT HOUSING: Nylon glass

Knobs

Acetal

Mechanical Characteristics

Mechanical Lifetime

100,000 Cycles of operation

Electrical Characteristics

Standards

This product comply with “ Standards for low-voltage switching devices” EN IEC 60947-5-1

Contact Ratings

125VAC 10A, 250VAC 6A (resistive load)

Insulation Resistance

Minimum 100M Ω (500VDC)

Contact Resistance

Maximum 30m Ω

Electrical Lifetime

100,000 cycles of operation



Electrical Characteristics—continues

Dielectric Strength

Between Live Parts: 1,500VAC(50/60Hz) for 1 minute

Between Live and Dead Parts: 1,500VAC(50/60Hz) for 1 minute

Environmental conditions

Operational Temperature

-15°C~+50°C

Operational Humidity

45~85%RH

Protection Degree

IP50

Shock Resistance

Approximately 50G

Vibration Resistance

10~55Hz double amplitude 1.5mm (at X, Y and Z axis)

Approvals

Approbations

UL, CCC, KC

Declaration of Conformity

CE

CONTROL
COMPONENTS

SQUARE
LIGHT

TOWER
LIGHT

MICRO
SWITCH

FOOT
SWITCH

LIMIT
SWITCH

POWER
SWITCH

HOIST
SWITCH

CAM
SWITCH

BUZZER

PHOTO
SENSOR

PROXIMITY
SENSOR

FLOATLESS
LEVEL SWITCH

TIMER &
COUNTER

RELAY

SOCKETS

TERMINAL
BLOCK

CONTROL
BOX

PID TEMP.
CONTROLLER