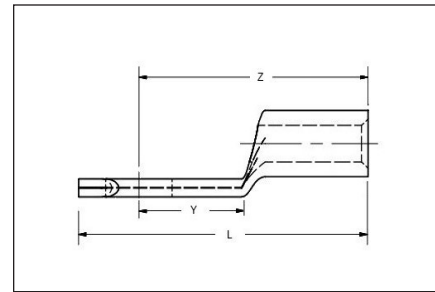


Non Insulated Copper Tubular Metric Lugs

HYLUG™

One Hole Metric Conductor Lug with Inspection Window



Made from electrolytic copper tube and electro tin plated. Wire range is from 1.5mm² to 630mm² for class 2 and class 5. Compatible to **IEC61238-1**.

| Catalog Number | *Wire Size (MM ²) | Stud Size | Dimensions (MM ²) | | | | Die Index | Installation Tooling (# Crimps) | | | Wire Strip Length (mm) |
|----------------|-------------------------------|-----------|-------------------------------|--------|--------|--------|-----------|-------------------------------------|--|---|------------------------|
| | | | Tongue Width | L Max. | Y Min. | Z Max. | | Mechanical | Hydraulic | Dieless | |
| | | | | | | | | MD6, OUR840, MD7-34R | Y35, Y39, Y750, PAT750, **Y46, PAT46** | | |
| YAV025M4 | 1.5 - 2.5 | M 4 | 8.3 | 19.0 | 6.1 | 15.1 | - | - | - | ▲ MRE1022B (1) MR20 (1) Y10D (1) Y10-22 (1) | 7 |
| YAV06M4 | 4 - 6 | M 4 | 9.5 | 23.8 | 6.6 | 19.1 | - | - | - | ■ MRE1022B (1) MR20 (1) Y10D (1) Y10-22 (1) | 11 |
| YAV06M5 | | M 5 | | | | | | | | | |
| YAV10M6 | 10 | M 6 | 11.1 | 33.5 | 8.1 | 25.6 | 49 | W8CRT (1) X8CRT (1) W8CVT (1) | U8CRT (1) | MY29-11 (1) MY29-3 (1) Y1MRTC (1) Y4PC834/PAT4PC834 (1) Y81KFT/PAT81KFT-18V (1) | 11 |
| YAV10M8 | | M 8 | | | | | | | | | |
| YAV16M6 | 16 | M 6 | 12.2 | 36.2 | 7.4 | 28.3 | 7 | W5CRT (1) X5CRT (1) W5CVT (1) | U5CRT (1) | MY29-11 (1) MY29-3 (1) Y1MRTC (1) Y4PC834/PAT4PC834 (1) Y81KFT/PAT81KFT-18V (1) Y644HSXT/PAT644HSXT (1) | 13 |
| YAV16M8 | 16 | M 8 | 13.1 | 37.8 | 9.0 | 29.1 | | | | | |
| YAV25M8 | 25 | M 8 | 15.9 | 37.7 | 8.5 | 28.7 | 9 | W3CRT (1) | U3CRT (1) | MY29-11 (1) MY29-3 (1) Y1MRTC (2) Y4PC834/PAT4PC834 (1) Y81KFT/ PAT81KFT-18V (1) Y644HSXT/PAT644HSXT (1) | 13 |
| YAV25M10 | 25 | M 10 | 14.8 | 41.4 | 8.5 | 31.1 | | | | | |
| YAV25M12 | 25 | M 12 | 18.5 | 42.7 | 11.9 | 30.6 | | | | | |
| YAV35M6 | 35 | M 6 | 15.3 | 41.2 | 9.9 | 33.3 | 10 | W2CVT (1) W2CRT (1) X2CRT (1) | U2CRT (1) | MY29-11 (1) MY29-3 (1) Y1MRTC (2) Y4PC834/PAT4PC834 (1) Y81KFT/ PAT81KFT-18V (1) Y644HSXT/PAT644HSXT (1) | 17 |
| YAV35M8 | 35 | M 8 | | 42.8 | 10.6 | 34.1 | | | | | |
| YAV35M10 | 35 | M 10 | 17.2 | 46.0 | 12.2 | 35.7 | 12 | W25RT (2) X25RT (2) W25VT (2) | U25RT (1) | MY29-11 (1) MY29-3 (1) Y81KFT/ PAT81KFT-18V (1) Y4PC834/PAT4PC834 (1) Y644HSXT/PAT644HSXT (1) | 19 |
| YAV35M12 | 35 | M 12 | 18.5 | 52.4 | 15.4 | 38.9 | | | | | |
| YAV50M10 | 50 | M 10 | 17.2 | 46.0 | 12.2 | 35.7 | 13 | W26RT (2) X26RT (2) W26VT (2) | U26RT (1) | MY29-11 (1) MY29-3 (1) Y81KFT/ PAT81KFT-18V (1) Y4PC834/PAT4PC834 (1) Y644HSXT/PAT644HSXT (1) | 19 |
| YAV50M12 | 50 | M 12 | 18.5 | 53.9 | 15.4 | 40.4 | | | | | |
| YAV70M10 | 70 | M 10 | 21.0 | 49.2 | 12.2 | 39.0 | 13 | W26RT (2) X26RT (2) W26VT (2) | U26RT (1) | MY29-11 (1) MY29-3 (1) Y81KFT/ PAT81KFT-18V (1) Y4PC834/PAT4PC834 (1) Y644HSXT/PAT644HSXT (1) | 19 |
| YAV70M12 | 70 | M 12 | | 55.6 | 15.4 | 42.1 | | | | | |

- ▲ Use 14 AWG tool setting
- Use 10 AWG tool setting

** Use PUADP-1 Adaptor with U-Dies in Y46 HYPRESS™

NOTE: All dimensions shown are for reference only

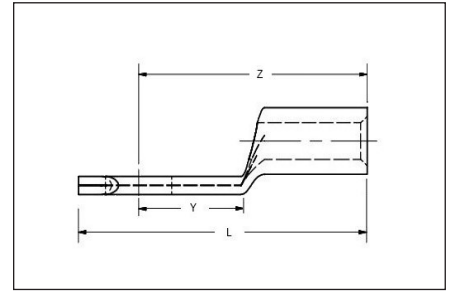
NOTE:

* Sizes 1.5 to 35 mm² are for class 2 and 5. All other sizes are for Class 2 only, except where noted.

Non Insulated Copper Tubular Metric Lugs (Continued)

HYLUG™

One Hole Metric Conductor Lug with Inspection Window



| Catalog Number | *Wire Size (MM ²) | Stud Size | Dimensions (MM ²) | | | | Die Index | Installation Tooling (# Crimps) | | | Wire Strip Length (mm) |
|----------------|-------------------------------|-----------|-------------------------------|--------|--------|--------|-----------|-------------------------------------|--|---|------------------------|
| | | | Tongue Width | L Max. | Y Min. | Z Max. | | Mechanical | Hydraulic | Dieless | |
| | | | | | | | | MD6, OUR840, MD7-34R | Y35, Y39, Y750, PAT750, **Y46, PAT46** | | |
| YAV95M10 | 95 | M 10 | 23.7 | 53.6 | 10.7 | 43.3 | 14 | W27RT (2) X27RT (3) W27VT (2) | U27RT (1) | MY29-11 (1) Y4PC834/PAT4PC834 (1) Y81KFT/ PAT81KFT-18V (1) Y644HSXT/PAT644HSXT (1) | 22 |
| YAV95M12 | 95 | M 12 | | 59.9 | 13.9 | 46.4 | | U28RT (1) | | | |
| YAV120M10 | 120 | M 10 | 29.0 | 61.4 | 10.7 | 51.1 | 15 | W28VT (2) W28RT (2) X28RT (2) | U28RT (1) | Y4PC834/PAT4PC834 (2) Y81KFT/ PAT81KFT-18V (2) Y644HSXT/PAT644HSXT (1) | 27 |
| YAV120M12 | 120 | M 12 | | 67.7 | 14.6 | 54.3 | | U30RT (2) | | | |
| YAV150M12 | 150 | M 12 | 30.5 | 68.2 | 15.4 | 54.7 | 17 | W30VT (2) | U30RT (2) | Y4PC834/PAT4PC834 (3) Y81KFT/ PAT81KFT-18V (3) Y644HSXT/PAT644HSXT (1) | 29 |
| YAV185M12 | 185 | M 12 | 32.8 | 69.8 | | 56.3 | 18 | W31VT (2) | U31RT (2) | | |
| YAV240M12 | 240 | M 12 | 39.4 | 79.1 | 16.2 | 65.7 | 20 | W34VT (2) | U34RT (2) | Y4PC834/PAT4PC834 (3) Y81KFT/ PAT81KFT-18V (3) Y644HSXT/PAT644HSXT (1) | 33 |
| YAV300M12 | 300 | M 12 | 44.2 | 83.4 | | 70.0 | 22 | - | U36RT (2) | | |
| YAV500M12 | 500 | M 12 | 55.7 | 96.2 | 13.9 | 82.8 | L115 | - | U44XRT (2) | Y4PC834/PAT4PC834 (3) Y81KFT/ PAT81KFT-18V (3) Y644HSXT/PAT644HSXT (1) | 43 |
| YAV630M12 | 630 | M 12 | 62.5 | 107.7 | | 94.2 | 29 | - | P45RT (3) + | | |
| YAV400FM12 | 400 Class 5 | M 12 | 50.2 | 87.0 | 13.9 | 73.6 | 24 | - | U39RT (2) P39RT (2)+ | Y4PC834/PAT4PC834 (3) Y81KFT/ PAT81KFT-18V (3) Y644HSXT/PAT644HSXT (1) | 37 |

+ P-RT Die sets for use in Y46 HYPRESS™

** Use PUADP-1 Adaptor with U-Dies in Y46 HYPRESS™

NOTE: All dimensions shown are for reference only

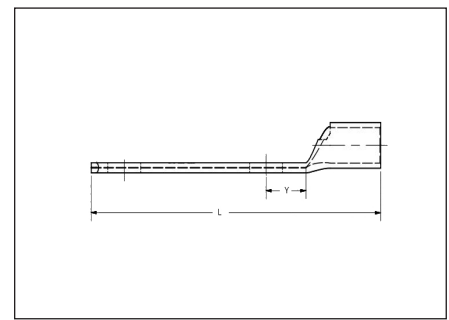
NOTE:

* Sizes 1.5 to 35 mm² are for class 2 and 5. All other sizes are for Class 2 only, except where noted.

Non Insulated Copper Tubular Metric Lugs

HYLUG™

Two Hole Metric Conductor Lug with Inspection Window



Made from electrolytic copper tube and electro tin plated. Wire range is from 1.5mm² to 630mm² for class 2 and class 5. Compatible to **IEC61238-1**.

| Catalog Number | *Wire Size (MM ²) | Stud Size | Dimensions (MM ²) | | | | Die Index | Installation Tooling (# Crimps) | | | Wire Strip Length (mm) | |
|----------------|-------------------------------|-----------|-------------------------------|-------------------|--------|--------|-----------|-------------------------------------|--|--|------------------------|----|
| | | | Tongue Width | Stud Hole Spacing | L Max. | Y Min. | | Mechanical | Hydraulic | Dieless | | |
| | | | | | | | | MD6, OUR840, MD7-34R | Y35, Y39, Y750, PAT750, **Y46, PAT46** | | | |
| YAV352M10 | 35 | M 10 | 17.2 | 44.5 | 90.7 | 16.3 | 10 | W2CVT (1) W2CRT (1) X2CRT (1) | U2CRT (1) | MY29-3 (1) MY29-11 (1) Y1MRTC (2) Y4PC834/PAT4PC834 (1) Y644HSXT/PAT644HSXT (1) Y81KFT/PAT81KFT-18V (1) | 17 | |
| YAV502M10 | 50 | M 10 | 17.2 | | 90.7 | 12.5 | 12 | W25RT (2) X25RT (2) W25VT (2) | U25RT (1) | | | |
| YAV702M10 | 70 | M 10 | 21.0 | | 93.9 | | 13 | W26RT (2) X26RT (2) W26VT (2) | U26RT (1) | MY29-3 (1) MY29-11 (1) Y4PC834/PAT4PC834 (1) Y644HSXT/PAT644HSXT (1) Y81KFT/ PAT81KFT-18V (1) | 19 | |
| YAV952M12 | 95 | M 12 | 23.7 | | 104.6 | 14.1 | 14 | X27RT (3) W27RT (2) W27VT (2) | U27RT (1) | MY29-11 (3) Y4PC834/PAT4PC834 (1) Y81KFT/ PAT81KFT-18V (1) Y644HSXT/PAT644HSXT (1) | 22 | |
| YAV1202M12 | 120 | M 12 | 29.0 | | 112.4 | | 15 | W28VT (2) W28RT (2) X28RT (2) | U28RT (1) | | 27 | |
| YAV1502M12 | 150 | M 12 | 30.5 | | 112.9 | 15.7 | 17 | W30VT (2) | U30RT (2) | | | |
| YAV1852M12 | 185 | M 12 | 32.8 | | 114.5 | | 18 | W31VT (2) | U31RT (2) | Y4PC834/PAT4PC834 (2) Y644HSXT/PAT644HSXT (1) Y81KFT/ PAT81KFT-18V (2) | 29 | |
| YAV2402M12 | 240 | M 12 | 39.4 | | 123.9 | 16.4 | 20 | W34VT (2) | U34RT (2) | | 33 | |
| YAV3002M12 | 300 | M 12 | 44.2 | | 128.1 | 13.9 | 22 | - | U36RT (2) | | | 35 |
| YAV4002M12 | 400 | M 12 | 50.2 | | 131.7 | | 24 | - | U39RT (2) P39RT (2) | Y4PC834/PAT4PC834 (3) Y644HSXT/PAT644HSXT (1) Y81KFT/ PAT81KFT-18V (3) Y81KFTMBH (3) | | 37 |
| YAV5002M12 | 500 | M 12 | 55.7 | 140.9 | L115 | | - | U44XRT (2) | | | 43 | |
| YAV6302M12 | 630 | M 12 | 62.5 | 152.4 | | 29 | - | P45RT (3) | | | 55 | |

+ P-RT Die set for use with Y46 HYPRESS™

** Use PUADP-1 Adaptor with U-Dies in Y46 HYPRESS™

NOTE: All dimensions shown are for reference only

NOTE:

* Sizes 1.5 to 35 mm² are for class 2 and 5. All other sizes are for Class 2 only, except where noted.