



ARTICULO COMERCIAL

BOMBA DE DOBLE ENGRANAJE

AC- 1094

TIPO 1 MULTIPLE- MULTIPLE PUMPS

TIPO TYPE		cm ³ /g.	litr./min. a 1500 giri/min.	Pressione max. di esercizio a 1500 giri/min. Bar	Pressione max. di punta a 1500 giri/min. Bar	Velocità max. giri/min.	DIMENSIONI DIMENSIONS	
D	S	cm ³ /g.	litres/min. at 1500 r.p.m.	Max. operating pressure at 1500 r.p.m. Bar	Max. peak pressure at 1500 r.p.m. Bar	Max. speed r.p.m.	H	L
a ID 2	a IS 2	1,3	2,0	220	260	6000	86	40
a ID 3	a IS 3	2,0	3,1	220	260	6000	88	41
a ID 4	a IS 4	2,7	4,1	220	260	5000	90	42
a ID 6	a IS 6	4,1	6,1	210	250	4000	94	44
a ID 7	a IS 7	5,1	7,6	210	250	4000	97	45,5
a ID 9	a IS 9	6,1	9,1	200	240	3800	100	47



La pompa anteriore tipo 1 può essere fornita anche con i fori di aspirazione e mandata filettati come segue:
 Pompe tipo: 1 D/S 2; 1 D/S 3; 1 D/S 4 aspirazione 1/2" Gas mandata 3/8" Gas.
 Pompe tipo: 1 D/S 6; 1 D/S 7; 1 D/S 9 aspirazione e mandata 1/2" Gas

The front pump type 1 can also be supplied with threading in the inlet and outlet ports as follows:
 Pumps type: 1 D/S 2; 1 D/S 3; 1 D/S 4; inlet 1/2" Gas, outlet 3/8" Gas.
 Pumps type: 1 D/S 6; 1 D/S 7; 1 D/S 9 inlet and outlet 1/2" Gas.

TIPO TYPE		cm ³ /g.	litr./min. a 1500 giri/min.	Pressione max. di esercizio a 1500 giri/min. Bar	Pressione max. di punta a 1500 giri/min. Bar	Velocità max. giri/min.	DIMENSIONI DIMENSIONS	
		cm ³ /g.	litres/min. at 1500 r.p.m.	Max. operating pressure at 1500 r.p.m. Bar	Max. peak pressure at 1500 r.p.m. Bar	Max. speed r.p.m.	P	R
1 IDS 2		1,3	2,0	220	260	6000	92	46
1 IDS 3		2,0	3,1	220	260	6000	94	47
1 IDS 4		2,7	4,1	220	260	5000	96	48
1 IDS 6		4,1	6,1	210	250	4000	100	50
1 IDS 7		5,1	7,6	210	250	4000	103	51,5
1 IDS 9		6,1	9,1	200	240	3800	106	53



La pompa intermedia tipo 1 può essere fornita anche con i fori di aspirazione e mandata filettati come segue:
 Pompe tipo: 1 D/S 2; 1 D/S 3; 1 D/S 4 aspirazione 1/2" Gas mandata 3/8" Gas.
 Pompe tipo: 1 D/S 6; 1 D/S 7; 1 D/S 9 aspirazione e mandata 1/2" Gas.

The middle pump type 1 can also be supplied with threading in the inlet and outlet ports as follows:
 Pumps type: 1 D/S 2; 1 D/S 3; 1 D/S 4; inlet 1/2" Gas, outlet 3/8" Gas.
 Pumps type: 1 D/S 6; 1 D/S 7; 1 D/S 9 inlet and outlet 1/2" Gas.

TIPO TYPE		cm ³ /g.	litr./min. a 1500 giri/min.	Pressione max. di esercizio a 1500 giri/min. Bar	Pressione max. di punta a 1500 giri/min. Bar	Velocità max. giri/min.	DIMENSIONI DIMENSIONS	
D	S	cm ³ /g.	litres/min. at 1500 r.p.m.	Max. operating pressure at 1500 r.p.m. Bar	Max. peak pressure at 1500 r.p.m. Bar	Max. speed r.p.m.	A	B
p ID 2	p IS 2	1,3	2,0	220	260	6000	86	46
p ID 3	p IS 3	2,0	3,1	220	260	6000	88	47
p ID 4	p IS 4	2,7	4,1	220	260	5000	90	48
p ID 6	p IS 6	4,1	6,1	210	250	4000	94	50
p ID 7	p IS 7	5,1	7,6	210	250	4000	97	51,5
p ID 9	p IS 9	6,1	9,1	200	240	3800	100	53



La pompa posteriore tipo 1 può essere fornita anche con i fori di aspirazione e mandata filettati come segue:
 Pompe tipo: 1 D/S 2; 1 D/S 3; 1 D/S 4 aspirazione 1/2" Gas mandata 3/8" Gas.
 Pompe tipo: 1 D/S 6; 1 D/S 7; 1 D/S 9 aspirazione e mandata 1/2" Gas.

The rear pump type 1 can also be supplied with threading in the inlet and outlet ports as follows:
 Pumps type: 1 D/S 2; 1 D/S 3; 1 D/S 4; inlet 1/2" Gas, outlet 3/8" Gas.
 Pumps type: 1 D/S 6; 1 D/S 7; 1 D/S 9 inlet and outlet 1/2" Gas.

Revisión	A		Sustituye a:	Sustituido por:	Comprobado	P. Martínez	h 2
Fecha	11-04-06				Fecha	09-02-05	3 h

PATENTES



ARTICULO COMERCIAL

BOMBA DE DOBLE ENGRANAJE

AC- 1094

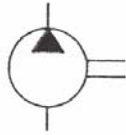


MARZOCCHI

CURVE CARATTERISTICHE PERFORMANCE CURVES

TIPO
TYPE

1 D 4



CILINDRATA
DISPLACEMENT

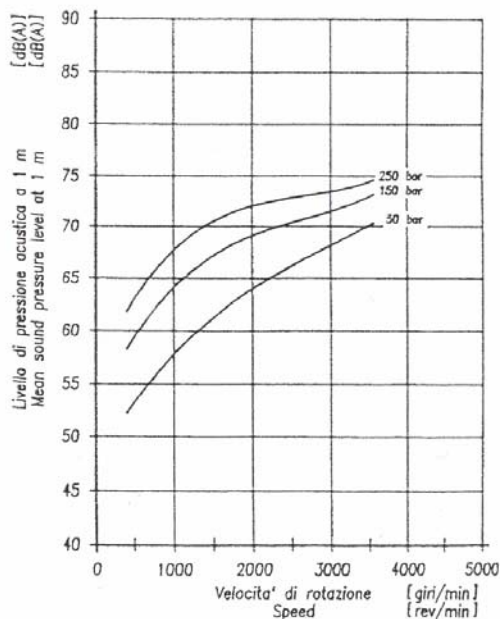
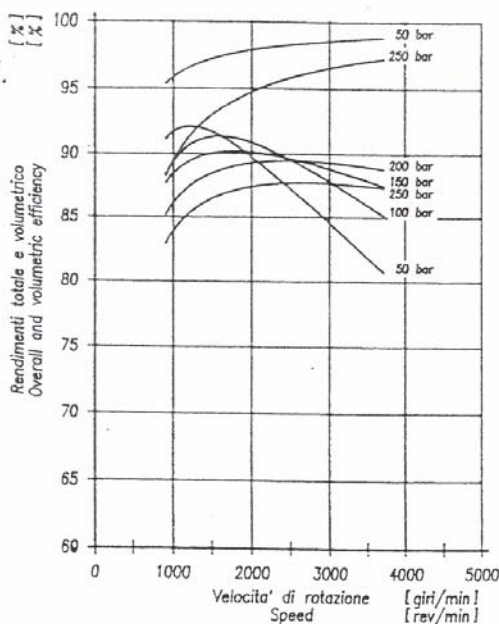
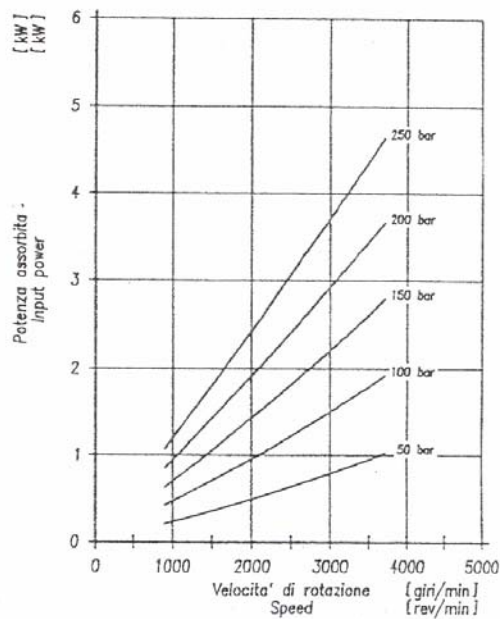
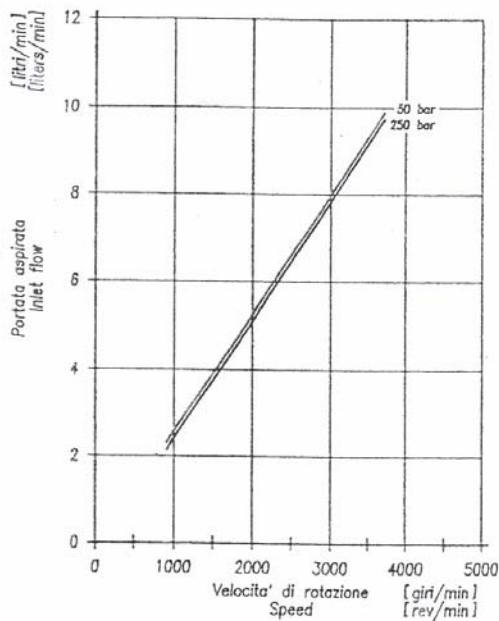
2.7 cm³/giro
cm³/rev

FLUIDO
OLIO MINERALE
GRADAZIONE ISO 46
A 50 °C (28cst)

FLUID
MINERAL OIL
VISCOSITY GRADE ISO 46
AT 50 °C (28 cst)

DATA
DATE

26/03/87



Revisión	A		Sustituye a:	Sustituido por:	Comprobado	P. Martínez	h 3
Fecha	11-04-06				Fecha	09-02-05	3 h