

 Create pdf

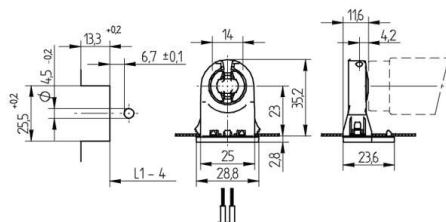
## Lampholders and starter holders

26.290.1011

G13 Push through lampholders



colour	pkg.	wt.	part no.
white	500	6 g	26.290.1011.50










Lamp centre: 23 mm  
Push fixing

Housing: PC  
Rotor: PBT

L1-4: Recommended dimension - The distance between the cut-outs and the tolerance should be governed by the dimensions of the respective lamps and luminaires.

- For cut-outs open at the rear or enclosed cut-outs with 4.5 mm dia. locating hole
- A pair of lampholders provides a lamp length tolerance compensation of 3 mm

T 130	Tm 110	U out 500 V					 18 AWG 0.5 -1.0 mm <sup>2</sup>	 0.4 - 2.0	
-------	--------	----------------	---	---	---	---	---	--	---

Document generated on: Th, 9. February 2017 - 13:09