

# K5

## K5

- Characteristics
- double break switching
  - long mechanical life
  - high electrical rating
  - faston terminals

Rating 250 VAC, 16 A

Dimensions (mm) 41 × 19 × 15.5

- Actuator
- plunger
  - ramp plunger
  - plain lever
  - roller lever

Approvals UL, CSA



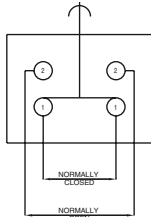
## Preferred Range

Ordering Reference	Actuating Force (N)      (ozf)		Sealing	Operating pos. (mm)      (in)		Terminal	Circuit	Actuator	Contacts	Electrical rating
K5UL	2.8	10.00	IP40	17.4	0.68	Faston	SPDT	Plunger	Ag	Up to 250 VAC, 16 A
K5CUL	2.8	10.00	IP40	16.7	0.66	Faston	SPDT	Ramp plunger	Ag	Up to 250 VAC, 16 A
K5KUL	1.4	5.00	IP40	20.3	0.80	Faston	SPDT	Plain lever	Ag	Up to 250 VAC, 16 A
K5KRUL	1.5	5.40	IP40	32.0	1.26	Faston	SPDT	Roller lever	Ag	Up to 250 VAC, 16 A
K5QUL	2.8	10.00	IP40	17.9	0.71	Faston	SPDT	Spring plunger	Ag	Up to 250 VAC, 16 A

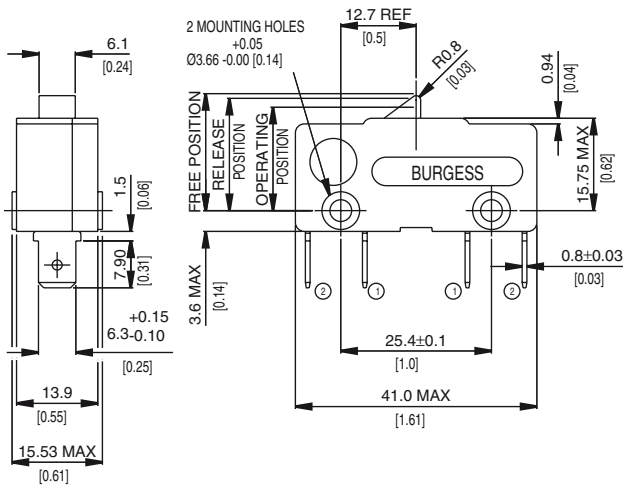
## Specifications

Housing	Glass fibre reinforced nylon
Plunger	Nylon
Mechanism	Two circuit double break change-over
Contacts	Silver
Terminals	6.3 mm (0.25 in) faston
Temperature range	-10°C to +85°C
Mechanical life	10 <sup>6</sup> cycles minimum (impact free actuation)
Type of protection	IP40 (enclosure)
Mounting	Side mounting
Actuators	Plain lever – stainless steel, roller lever - stainless steel, nylon roller

Circuit diagram



Dimensions


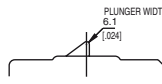
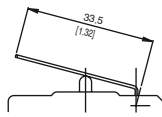
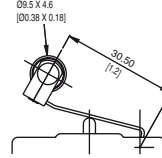
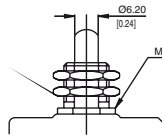


## Recommended maximum electrical ratings

Voltage (max)	Load (A)	Horsepower	Approval
250 VAC	16 (0.75 pf)		UL 1054/CSA 22.2 No. 55 - 6,000 operations
125 VAC	16 (0.75 pf)		UL 1054/CSA 22.2 No. 55 - 6,000 operations
250 VAC		3/4 HP	UL 1054 6,000 operations
125 VAC		3/4 HP	UL 1054 6,000 operations
0 - 15 VDC	15		General rating - 50,000 operations
15 - 30 VDC	10		General rating - 50,000 operations

Values shown are recommended maximum ratings for single circuit switching

## Operating Characteristics

Actuator	Reference	Actuating Force		Release Force		Free Position		Operating Position		Movement Differential		Overtravel	
		Maximum (N)	(ozf)	Minimum (N)	(ozf)	Maximum (mm)	(in)	(mm)	(in)	Maximum (mm)	(in)	(mm)	(in)
Plunger 	K5UL	2.8	10.00	1.1	4	19.7	0.78	17.4 ± 0.7	0.68 ± 0.028	1.27	0.05	*	
Ramp plunger 	K5CUL	2.8	10.00	1.10	4.00	19.7	0.78	16.7 ± 0.7	0.66 ± 0.028	2.2	0.09	*	
Plain lever 	K5KUL	1.4	5.00	0.35	1.25	28.0	1.10	20.3 ± 1.5	0.80 ± 0.06	3.2	0.13	*	
Roller lever 	K5KRUL	1.5	5.40	0.38	1.28	38.6	1.52	32.0 ± 1.5	1.26 ± 0.06	3.2	0.13	*	
Spring plunger 	K5QUL	2.8	10.00	1.10	4.00	20.6	0.81	17.9 ± 0.7	0.71 ± 0.028	1.27	0.05	4.6	0.18

\* Plunger can be depressed flush with housing. The housing should not be used as an end stop.

## Ordering Reference

Basic type	K5	Example: K5	C	UL
Actuators	No symbol, plain plunger C Ramp plunger K Plain lever 33.5 mm KR Roller lever 30.5 mm Q Spring plunger			
Approvals	UL	UL and CSA approval		
Special Features	/ <input type="checkbox"/> <input type="checkbox"/> <input type="checkbox"/> <input type="checkbox"/> Burgess specialise in customer specific solutions. Additional product variants are available or can be provided. If your requirements cannot be satisfied from the options listed, please contact <a href="http://www.saia-burgess.com">www.saia-burgess.com</a> or your local SB outlet.			