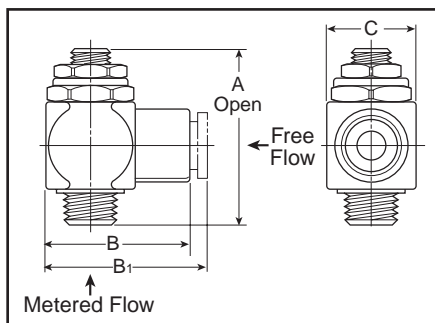
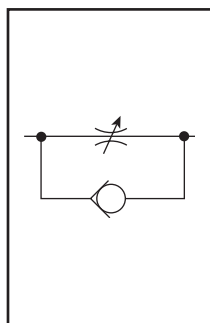


"3251" Series



Application

The Right Angle Flow Control is an ideal solution to cylinder speed control where space is at a premium. Costly fittings, connections and piping expenses can be eliminated because the valve can rotate 360°, the piping alignment can be in any direction. The 1/8" model can be rotated after final assembly.

Operation

Install by threading male end directly into cylinder port. The free-flow and metered-flow direction is automatically predetermined. Free-flow direction is into cylinder and metered-flow is out of the cylinder. Flow is adjusted with an Allen wrench and locked with nut.

Right Angle Flow Control also available with Prestolok fittings on inlet port to accommodate 5/32 - 3/8 tube sizes. This allows for quick connection and eliminates need for separate tube fitting.

Valve Specifications

- Body..... Brass
- Plunger Brass and Acetal
- Seals Buna N
- Temperature Range.....0°F to 140°F (-18°C to 60°C)
- Pressure Rating..... 125 PSIG (863 kPa) max.

Model Selection Information and Dimensions

Model Number	Thread (NPT) Male	Thread (NPT) Female	A		B		C		Weight		Cv	
			Inches	mm	Inches	mm	Inches	mm	oz.	kg.	Adjusted Flow	Free Flow
03251 0125	1/8	1/8	1.74	44	1.18	30	0.67	17	2.0	0.9	0.26	0.20
03251 0250	1/4	1/4	1.99	51	1.40	36	0.91	23	4.5	2.0	0.75	0.68
03251 0375	3/8	3/8	2.28	58	1.71	43	1.06	27	7.0	3.2	0.84	0.72
03251 0500	1/2	1/2	2.69	68	1.98	53	1.26	32	11.0	5.0	1.64	1.41
With Prestolok Fittings	Thread (NPT)	Tube Size	A		B ₁		C		Weight		Cv	
03251 1215	1/8	5/32	1.74	44	1.18	30	0.67	17	2.0	0.9	0.19	0.16
03251 1225	1/8	1/4	1.74	44	1.18	30	0.67	17	2.0	0.9	0.28	0.22
03251 2525	1/4	1/4	1.99	51	1.40	36	0.91	23	4.5	2.0	0.51	0.44
03251 2538	1/4	3/8	1.99	51	1.40	36	0.91	23	4.5	2.0	0.62	0.53
03251 3838	3/8	3/8	2.28	58	1.71	43	1.06	27	7.0	3.2	0.78	0.65

CAUTION: If it is possible that the ambient temperature may fall below freezing, the medium must be moisture-free to prevent internal damage or unpredictable behavior.

F