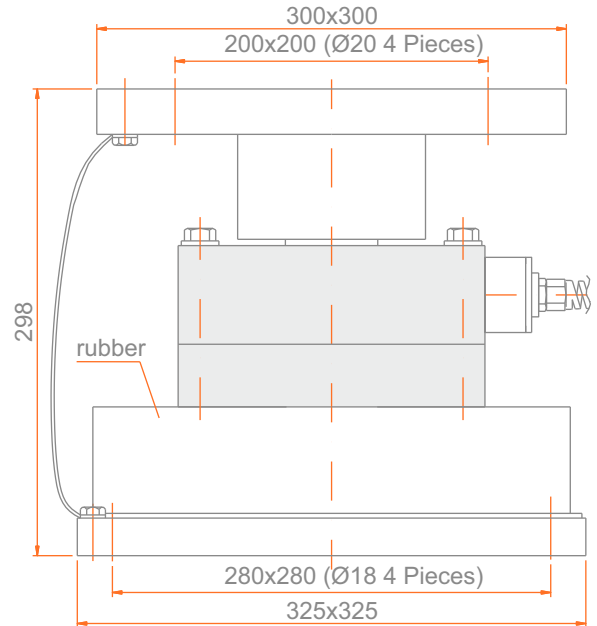


Type HSC-EL

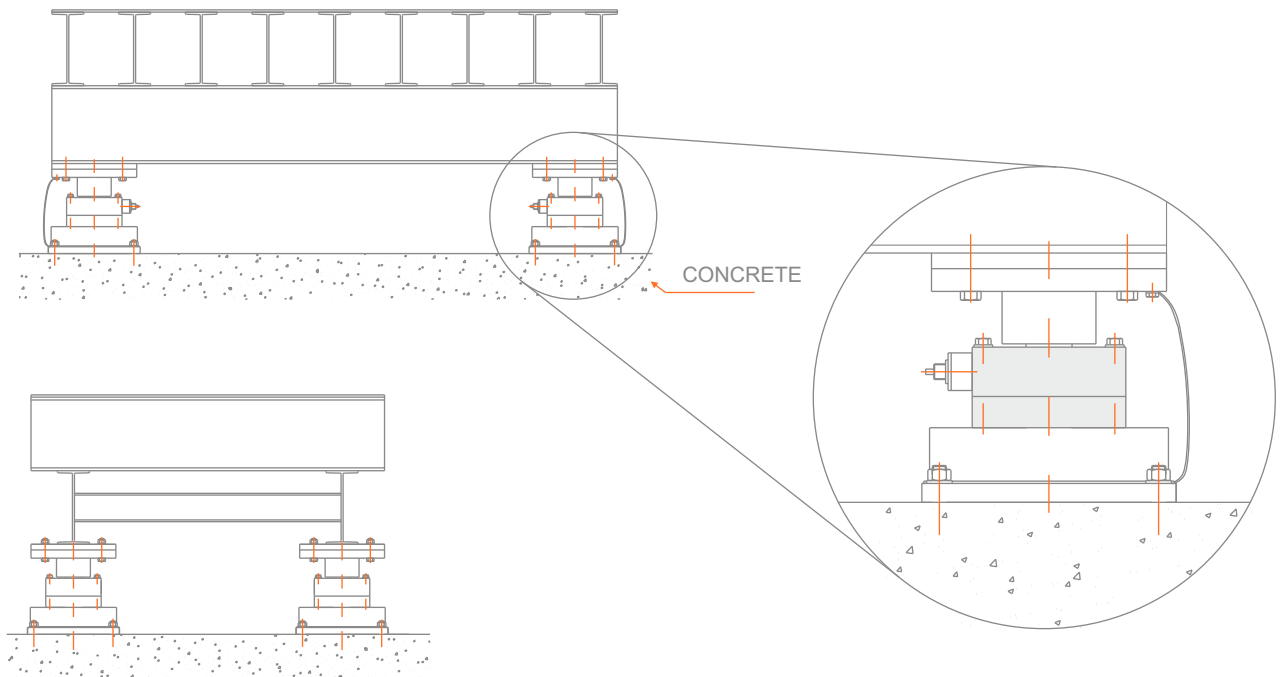
Elastomer Mounting Kit

(All dimensions are expressed in millimeters)



- Maintains a stable measurement in weighing systems where vibrations and impact loads are present
- Eliminates problems arising from thermal expansion
- Corrects off-center loads
- Protects the load cell against leakage currents with a grounding cable

Application Graphic



Esit reserves the right to modify, without prior notice, the products in accordance with technological developments.