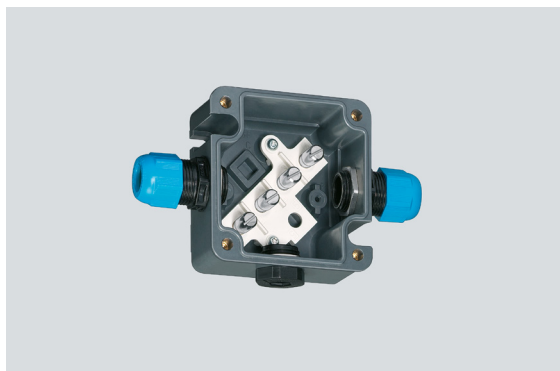


8118/211-401 Art. No. 133084



- Resistant Ex e enclosure, universally usable as connection or junction boxes and/or to safeguard electric distributors up to 6.3 A
- Degree of protection IP66
- With mantle terminals or with a combination of mantle terminals and miniature fuses (optional)

WebCode 8118A



R. STAHL Series 8118 Ex e junction boxes are equipped with 4, 5 or 8 mantle terminals depending on their design size. As an option, miniature fuses can still be installed in addition. Junction boxes are also suitable for safeguarding. The robust enclosure made from glass fibre-reinforced polyester resin can be equipped with plastic or metal cable glands.

Technical Data

Explosion Protection

Application range (zones)	1 2 21 22
IECEX gas certificate	IECEX PTB 06.0026
ATEX gas certificate	PTB 99 ATEX 3103
IECEX dust certificate	IECEX PTB 06.0026
ATEX dust certificate	PTB 99 ATEX 3103
Ambient temperature °C	-40 ... +75 °C
Gas explosion protection IECEX	Ex ia ib IIC T6 Gb
Gas explosion protection ATEX	⊕ II 2 G Ex ia ib IIC T6 Gb
Dust explosion protection IECEX	Ex tb IIIC T80 °C Db
Dust explosion protection ATEX	⊕ II 2 D Ex tb IIIC T80 °C Db
Certificates	ATEX (PTB), Brazil (ULB), China (CQST), EAC (LPE), IECEX (PTB)
Ship approval	BVIS

Electrical Data

Rated operational voltage AC	60 V
Rated operational voltage AC	0 – 60 V
Frequency range	

Ambient Conditions

Ambient temperature	-40 °C ... +75 °C (T6)
Ambient temperature	(T6)

Mechanical Data

Degree of protection (IP)	IP66
Enclosure material	Polyester resin, rinforzato con fibra di vetro
Silicone-free	No
Clamping range max.	4 mm ²

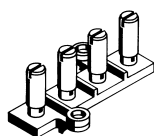
8118/211-401 Art. No. 133084

Mechanical Data

Connection cross-section	4 mm ²
Cover	Coperchio da avvitare
Width	85 mm
Height	85 mm
Depth	55 mm
Enclosure colour	grigio scuro
Weight	0.28 kg

Components

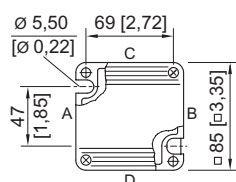
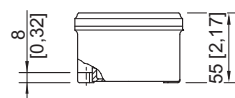
Entry 1	2 x Passacavo blu M20 Ø 4 ... 13 mm
Entry 2	1 x Tappi M20 x 1,5
Type of terminals 1	4 x Morsetto rivestito 4 mm ²



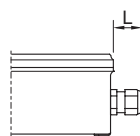
Arrangement of terminals



Dimensional Drawings (All Dimensions in mm [inches]) – Subject to Alterations



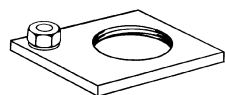
8118/1.1.
enclosure size 1



Length L
 protrusion length for cable glands, Series 8161
 in case of M20: 25 ... 31 mm
 in case of M25: 27 ... 33 mm
 in case of M32: 32 ... 39 mm
 protrusion length for cable glands with strain relief, Series HSK-K-MZ
 in case of M25: 41 mm

Accessories and Spare Parts

Brass plate with thread



for cable glands 1 x M20 x 1.5
 for earth continuity when using metal glands

can be installed into:
 enclosure size 1 side C / D
 enclosure size 2 side C / D
 enclosure size 3 side C / D

Art. No.

133208

We reserve the right to make alterations to the technical data, dimensions, weights, designs and products available without notice. The illustrations cannot be considered binding.