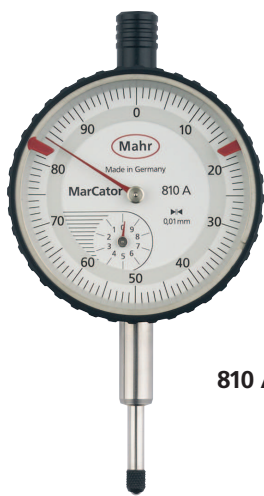
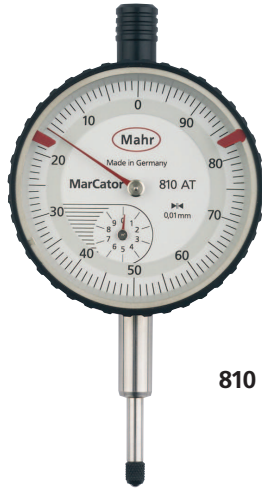


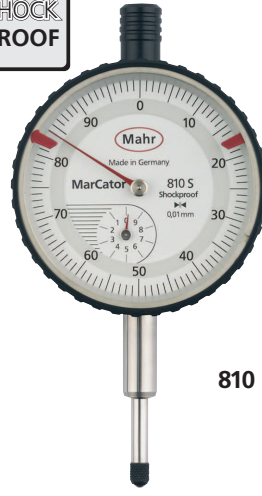
Precision Dial Indicators 810 DIN style



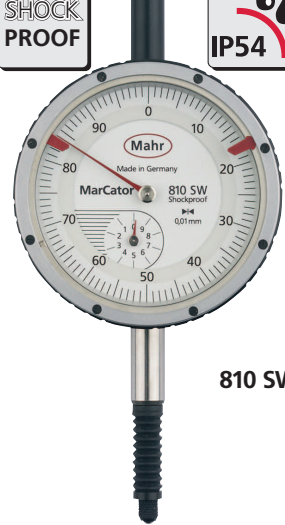
810 A



810 AT



810 S



810 SW

Features

Dial Indicator 810 A

Standard version

- High precision gears and pinions
- Lifter protection cap on the upper end of the measuring spindle
- Adjustable tolerance markers
- Chrome-plated housing

Dial Indicator 810 AT

for depth measurement

- Design features identical to 810 A, with the following exception:
- Scale of the dial face is counter-clockwise

Dial Indicator 810 S

Shockproof

- High precision gears and pinions
- Lifter protection cap on the upper end of the measuring spindle
- Adjustable tolerance markers
- Chrome-plated housing

Dial Indicator 810 SW

Waterproof and oil proof

- Design features identical to 810 S, with the following exceptions:
- Measuring spindle sealed with rubber sleeve, thus preventing contamination by liquids and impurities
 - Hermetically sealed protective measuring spindle cap

All indicators are delivered in plastic case

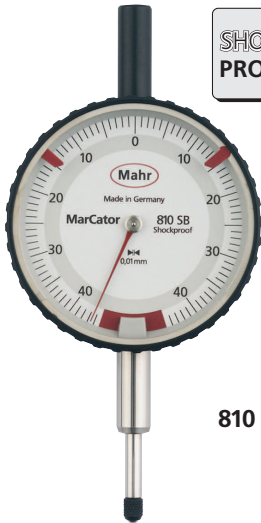
Technical Data

	Range	Readings	Dial face dia.	Overtravel	Mounting shank dia.	Measuring force	Accuracy	Order no.
	mm	mm	mm	mm	mm	N		
810 A	10	0.01	50	0.1	8h6	0.7 - 1.3	●	4311050
810 AT	10	0.01	50	0.1	8h6	0.7 - 1.3	●	4311060
810 S	10	0.01	50	0.1	8h6	0.7 - 1.3	●	4311000
810 SW	10	0.01	50	0.1	8h6	0.7 - 1.6	●	4315000
810 SB	0.8 (±0.4)	0.01	50	9	8h6	0.7 - 1.1	●	4317000
810 SM	1	0.001	50	4	8h6	1.3 - 1.8		4311070
810 SRM	5	0.001	50	0.1	8h6	1.2 - 1.7		4311080
810 AZ	.400"	.0005"	2"	.004"	8h6	0.9 - 1.5		4311900

Accessories

	Order no.		Order no.
Adapter Bush for adapting mounting shank 8h6 mm to inch bore .375"	940	4310103	
Splash Guard Cover for bezel dia. 58 mm	955	4373020	
		Mounting Lug	
		Bore perpendicular to mounting shank	961 4375010
		Bore parallel to mounting shank	962 4375011

Precision Dial Indicators 810 DIN style



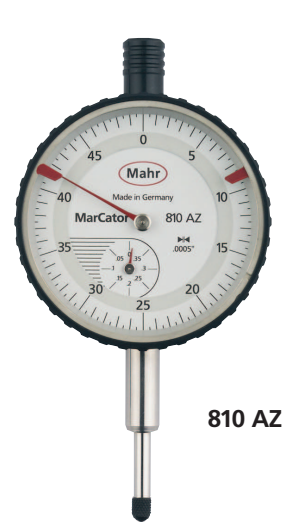
810 SB



810 SM



810 SRM



810 AZ

Features

Dial Indicator 810 SB with limited measuring range

Design features identical to 810 S, with the following exceptions:

- Limited measuring range (0.8 mm) for error-free readings
- Large overtravel (ca. 9 mm) for easier insertion of test items in measuring devices
- Hermetically sealed protective measuring spindle cap

Dial Indicator 810 SM Shockproof with reading 0.001 mm

- Precise mechanism with a combined gear lever transmission
- High accuracy with a minimum span of error
- Lifter protection cap on the upper end of the measuring spindle
- Adjustable tolerance markers
- Chrome-plated housing

Dial Indicator 810 SRM Shockproof with reading 0.001 mm

- High precision gears and pinions
- Lifter protection cap on the upper end of the measuring spindle
- Adjustable tolerance markers
- Chrome-plated housing

Dial Indicator 810 AZ Inch version

Design features are identical to 810 A, with the following exception:

- The scope of supply includes an Adapter Bush 940 for adapting mounting shank 8h6 mm to inch bore .375"

Dimensions according to DIN EN ISO 463

mm	a	b	c	d	e	f	g
810 A/AT	∅ 58	23	7.5	52	112	21	16
810 S	∅ 58	23	7.5	52	111.5	22	15
810 SW	∅ 61	24.15	7.9	52	127.6	22	22.1
810 SB	∅ 58	23	7.5	52	120	22	15
810 SM	∅ 58	25	8.5	52	111.5	22	15
810 SRM	∅ 58	23	7.5	52	111.5	22	15
810 AZ	∅ 58	23	7.5	52	111.5	22	15

