

S3-M

Socket for 11-pin Relays and Time / Monitoring Module

Rated Load **10 A / 250 V**

Specifications

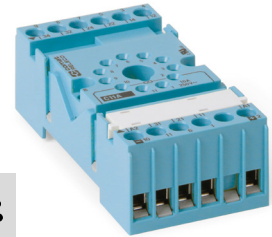
Rated impulse withstand voltage	2.5 kV rms / 1 min
– All terminals / DIN rail	2.5 kV rms / 1 min
– Terminal / Terminal	2.5 kV rms / 1 min
Cross-section of connecting wire	
– Single-wire	1 x 6 mm ² / AWG 10, 2 x 1.5 mm ² / AWG 16
– Multi-wire	1 x 4 mm ² /AWG 12, 2 x 1.5 mm ² /AWG 16
Nominal screw torque	0.7 Nm
Screw Dimensions (mm)	M3 Pozi slot
Mounting	TS-35 or Back Panel Mounting
Ambient temperature operation/storage	-25 ... 60 °C / -40 ... 80 °C (no ice)
Weight	61g

Included Accessories

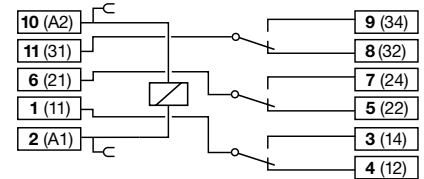
A2-Connector C-A2

Optional Accessories

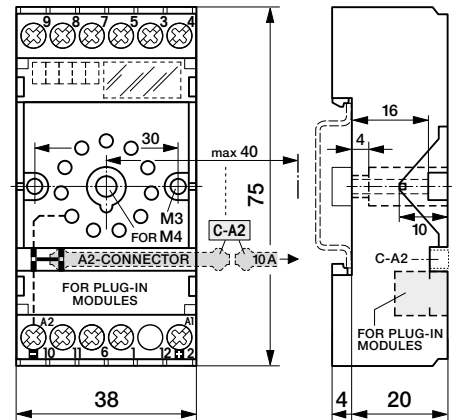
Retaining clip, steel	HF-32 (BAG 10 PCS) for C3 / C3x Relays
	HF-33 (BAG 10 PCS) for Time Cube CTx
Coding Ring	S3-BC (BAG 5 PCS) for C3 / C3x Relays
A2-Connector	C-A2 (BAG 5 PCS), C-A2 (BAG 50 PCS)
Free-wheeling Diode Module	RD1/DC12-220V
RC-Suppressor Module	RC1/UC110-240V



Connection diagram

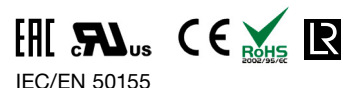


Dimensions (mm)



4.2 11-Pin Sockets

Technical approvals, conformities



IEC/EN 50155



Kühn Controls AG

Notes:

You want more information about this product, please call us: tel: +49 (0)7082-940000 or send us a fax: +49 (0)7082-940001, or email: sales@kuehn-controls.de or visit our Website: www.kuehn-controls.de